

Scrap Dragon X – Versions 3.2.0-3.2.1 Release Notes

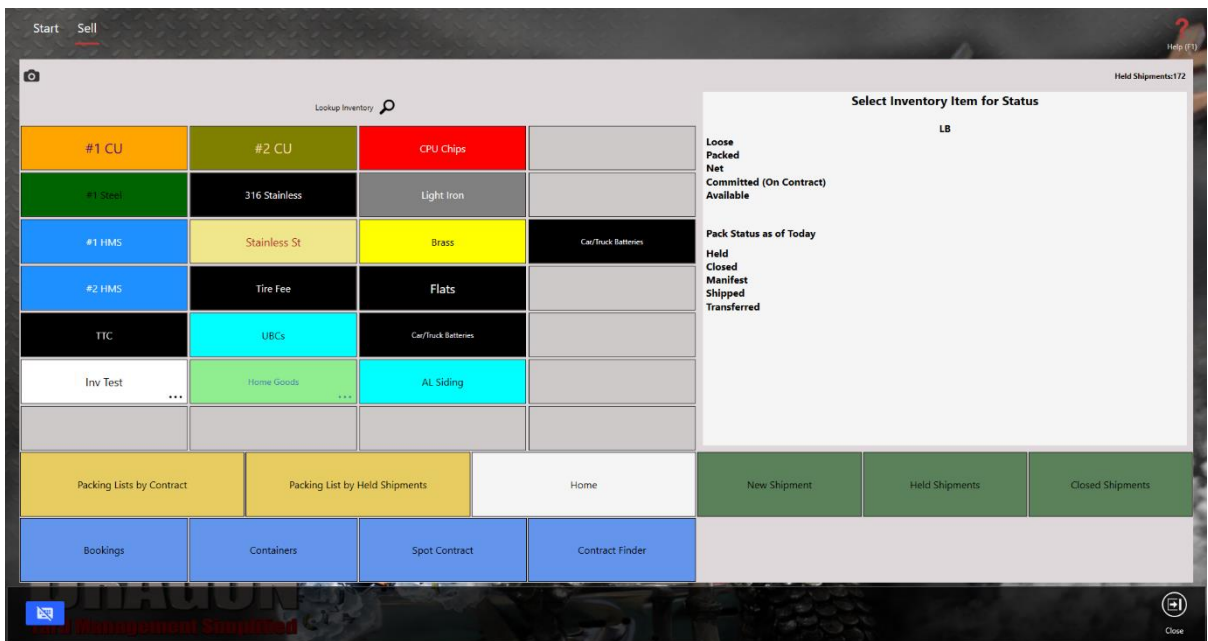
**The release notes for 3.2.0-3.2.1 are interactive, so click on the images, where applicable, to get more information on the various new features for this release.

New Look/Enhancements

Sell

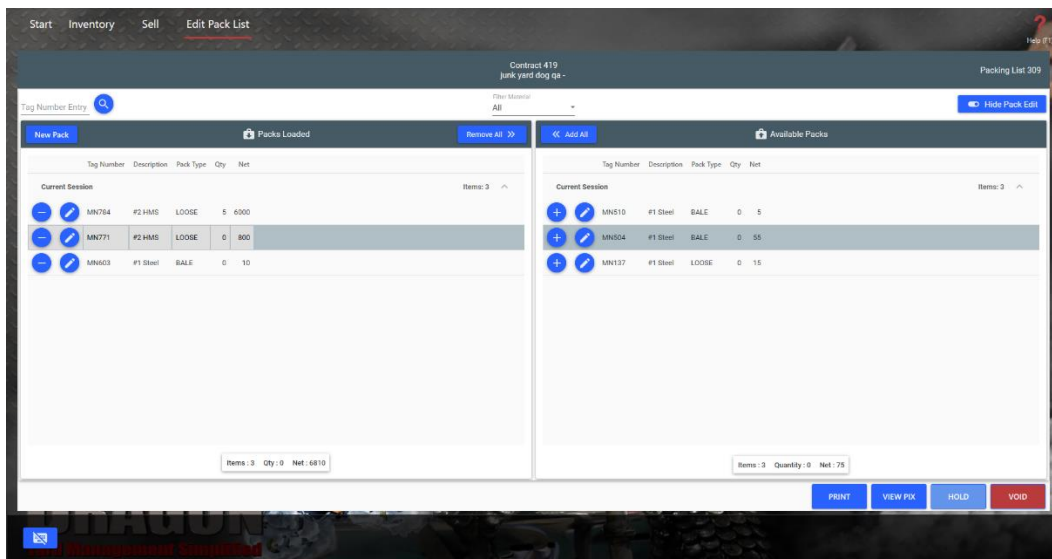
» Main Sell Screen

- » New functionality has allowed us to simplify the Sell Screen. There are no longer New Transfer, Held Transfer or Closed Transfer buttons. All Transfers can be searched for and managed Shipments buttons.
- » The Bookings and Containers buttons are no longer Action Item buttons and instead have been moved up to the main portion of the Sell Screen.
- » Contract Finder has been simplified into one button due to enhanced functionality.



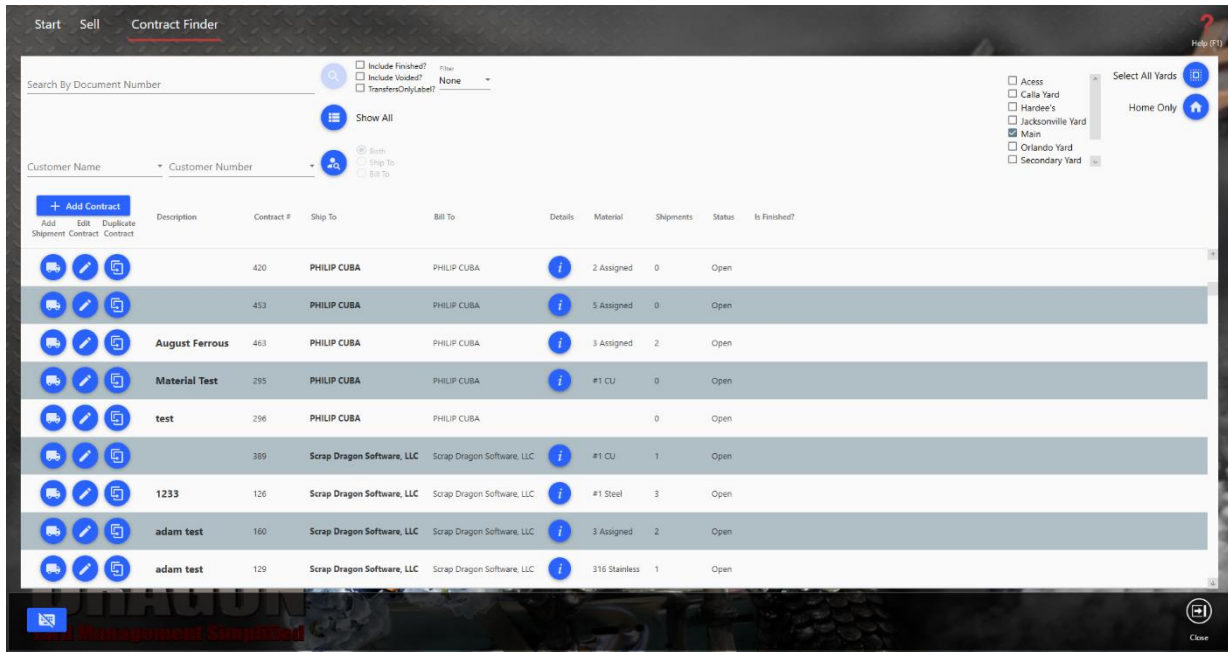
» Packing List Screen

- » The Packing List Screen has a completely new layout that allows easier management directly from the Packing List Screen.



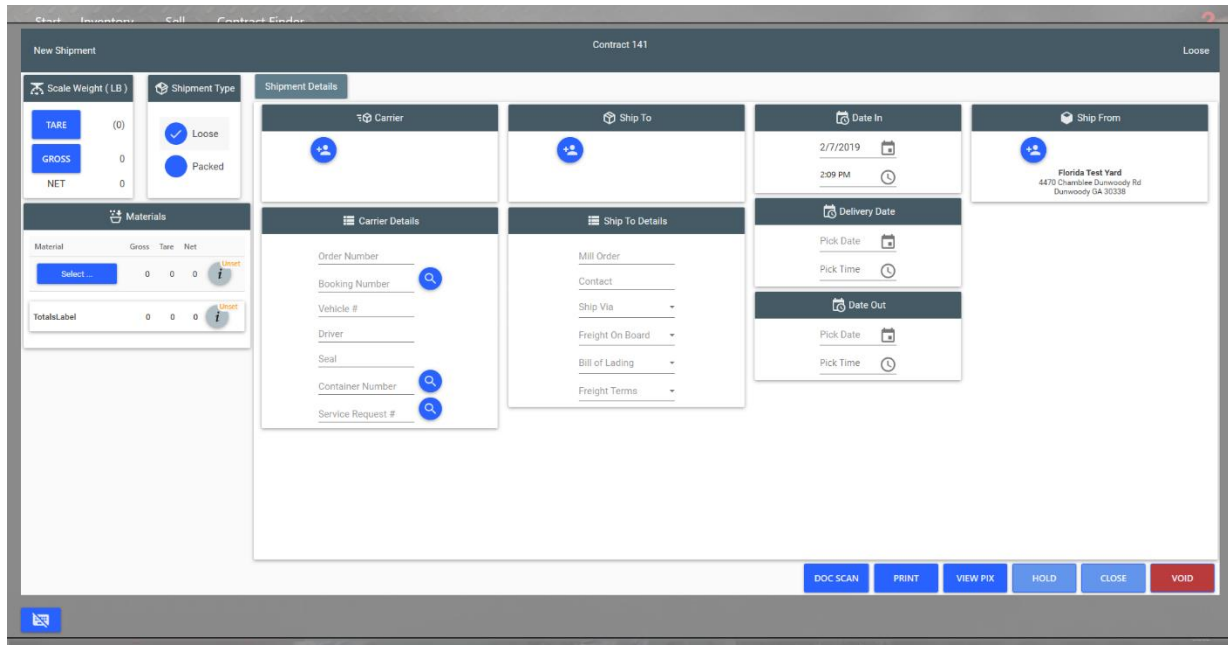
► Contract Finder Screen

- The Contract Finder Screen has a completely new layout that allows you to search for a Contract by Document or by Customer in the same place. The two separate Contract Finder by Document and Contract Finder by Customer buttons have been combined into a simplified Contract Finder button on the main Sell Screen.



► New Shipment Screen

- The New Shipment Screen has a new layout that is similar to the new Contract Finder and Packing List screens that allow easier Shipment management and creation from a single screen.



Inventory

➤ Available Packs Screen

- The Available Inventory Screen is accessible from the Main Inventory Screen through the Available Packs button. It has been simplified to include more streamlined search criteria. It also displays basic information and totals about available inventory all on the same screen. You can run reports or view pack details directly from this screen.

Start Inventory Available Inventory

Yard: Florida Test Yard

Group By Description: Inventory Description

Search Filter Code Clear

Code	Print Description	Number Of Packs	Quantity	Gross Weight	Tare Weight	Net Weight
Florida Test Yard						
#1 Steel	#1 Steel	4	0	85.0000	0	85.0000
#2 HMS	#2 HMS	2	5.00	10900.0000	4100.0000	6800.0000
316	316 Stainless	2	2.00	2260.0000	325.0000	1935.0000
A1 Copper	#1 CU	12	20.00	9130.0000	52.0000	9078.0000
Al Side	Al Siding	10	0	12950.0000	1025.0000	11925.0000
Auto Bats	Car/Truck Batteries	2	25.00	178.0000	20.0000	158.0000
Autos	Autos	3	0	17000.0000	3500.0000	13500.0000
B1 Copper	#2 CU	9	0	1846.0000	0	1846.0000
Brass	Brass	2	0	2388.2000	1026.8000	1361.4000
CPU Chips	CPU Chips	6	0	5500.0000	1005.0000	4495.0000
Diry Cast iron	Diry Cast iron	2	0	3500.0000	1050.0000	2450.0000
Totals:		85	127.00	153666.6000	31935.4000	121731.2000

Management Simplified

Pack Details Run Report Close

➤ Adjust Inventory Screen

- The Make Adjustments screen now has a simpler layout that displays information about available inventory and adjustments in one place. You can add adjustments directly from this screen.

Start Inventory Make Adjustments

Adjustments are applied in chronological order. The date of the adjustment can effect the available quantity and value of inventory and thereby the average cost per unit.
Negative weights will decrease the loose inventory
Positive weights increase loose inventory.

Select Yard: Florida Test Yard

Default Adjustment Date: 2/7/2019 3:20 PM

Current Inventory Date: January 2015

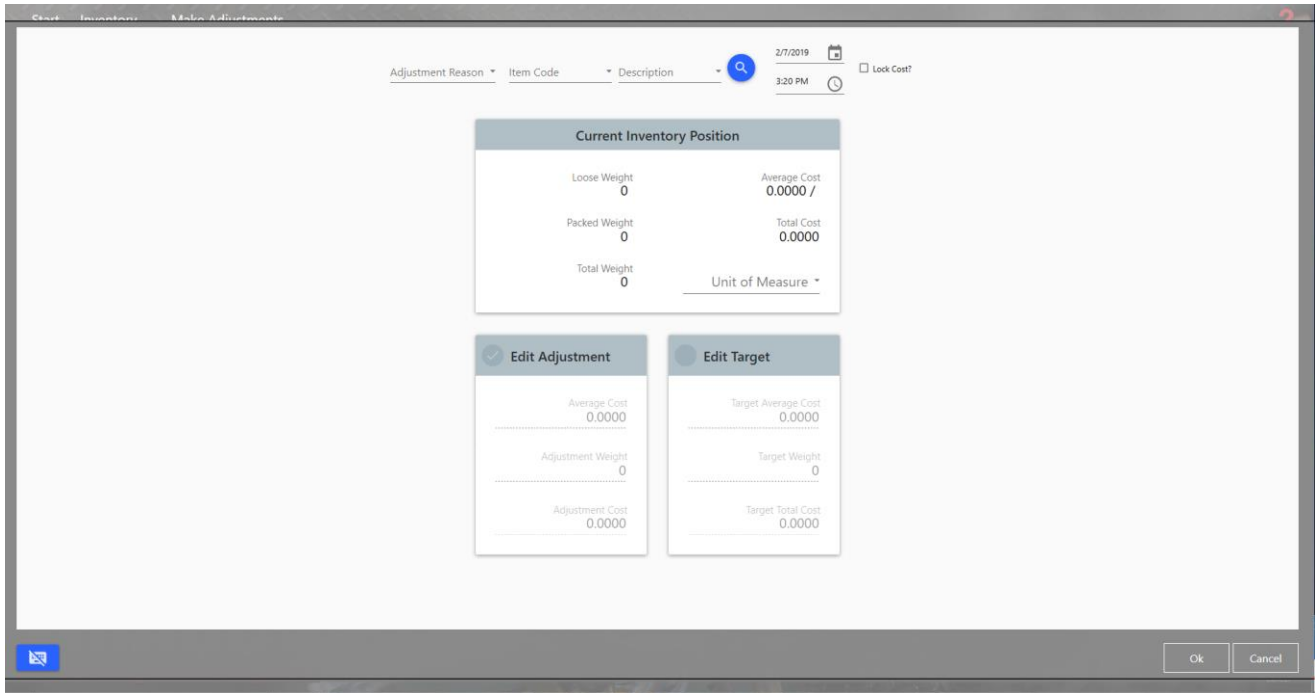
Material	Weight	U/M	Adj Cost	Adj Avg Cost	Adj Date/Time	Adj Reason	Avg Cost	Lock Cost?	On Hand	Tot Cost
----------	--------	-----	----------	--------------	---------------	------------	----------	------------	---------	----------

Total Adj Weight: 0 LB Total Adj Cost: 0.0000

Management Simplified

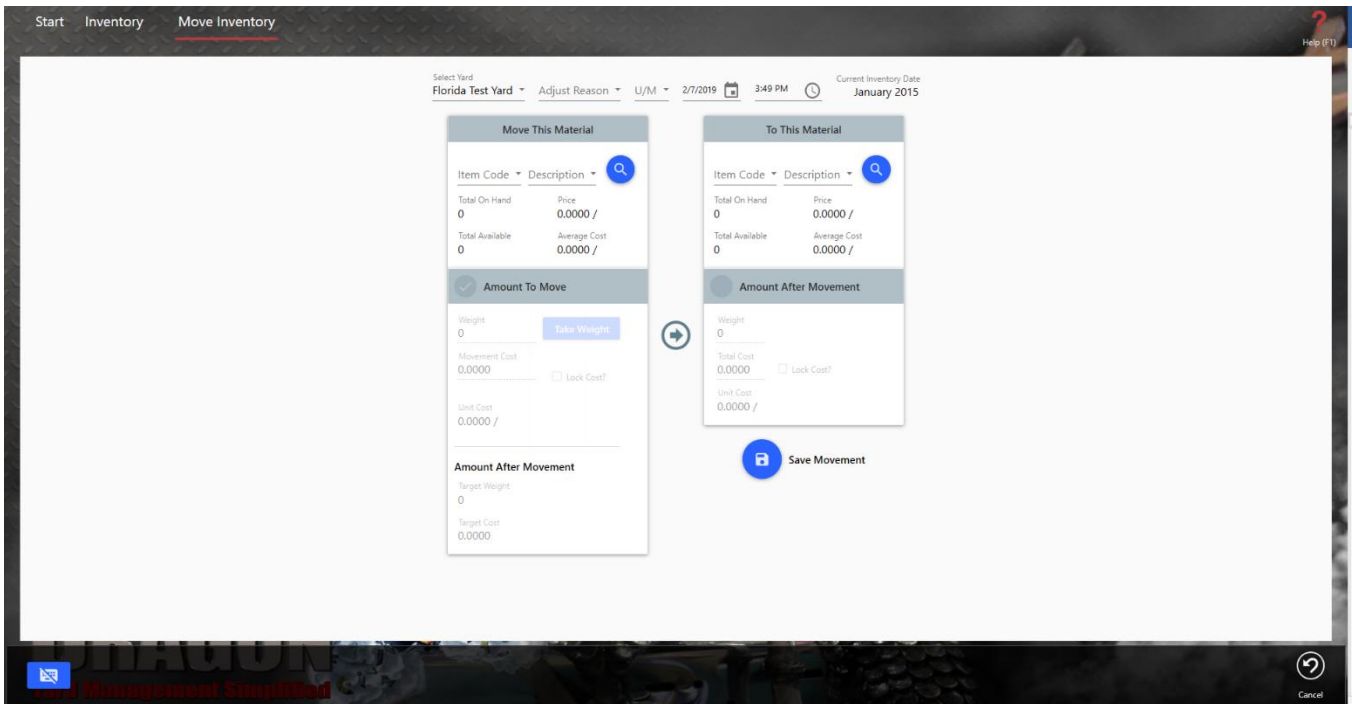
Cancel

- ▶ The Adjust Inventory Screen has a clean layout that allows you to add an adjustment reason, description and lookup inventory quickly and efficiently, while also providing information on current inventory positions.



▶▶ Move Inventory Screen

- ▶ The Move Inventory Screen has increased functionality due to the new layout that allows all information necessary for an inventory movement to be entered on a single screen. You can search for materials and save the movement directly from this screen.



» Edit Inventory Adjustments Screen

» The Edit Inventory Adjustments screen now has a simpler layout displaying all necessary information in one screen. You can remove or edit inventory adjustments from this screen, and search by item code and description. You can also select a different yard to view directly from this screen.

The screenshot shows the 'Edit Adjustments' screen. At the top, there is a navigation bar with 'Start', 'Inventory', and 'Edit Adjustments'. A help icon is in the top right. Below the navigation bar is a warning message: 'Adjustments are applied in chronological order. The date of the adjustment can effect the available quantity and value of inventory and thereby the average cost per unit. Negative weights will decrease the loose inventory, Positive weights increase loose inventory. Negative \$ amounts decrease inventory value, Positive \$ amounts increase inventory value.' Below this is a 'Select Yard' dropdown set to 'Florida Test Yard'. There are search fields for 'Item Code' and 'Description', both set to '#1 HMS'. The 'Current Inventory Date' is 'January 2015'. A table lists adjustments with columns: Details, Type, Weight, U/M, Adj Cost, Adj Avg Cost, Adj Date/Time, Adj Reason, Avg Cost, Lock Cost?, On Hand, and Tot Cost. The table contains three rows: 1. Not Applicable (Type A), Weight -60.0000, Adj Cost -7.2700, Adj Avg Cost 0.1212, Adj Date/Time 11/18/2015 6:57:02 AM, Adj Reason Physical, Avg Cost -14.8268, On Hand 202,941.0240, Tot Cost 24,606.4000. 2. From #1 Steel To #1 HMS (Type M), Weight 1,000.0000, Adj Cost 159,737.6700, Adj Avg Cost 159.7377, Adj Date/Time 10/16/2018 12:49:57 PM, Adj Reason Upgrade, Avg Cost -14.8268, On Hand -12,978.9760, Tot Cost 158,006.8300. 3. From #1 Steel To #1 HMS (Type M), Weight 500.0000, Adj Cost 79,868.8300, Adj Avg Cost 159.7377, Adj Date/Time 10/16/2018 12:51:22 PM, Adj Reason Upgrade, Avg Cost -14.8268, On Hand -12,478.9760, Tot Cost 237,875.6600. At the bottom of the table, it says 'Total Adj Weight: 1,440 LB Total Adj Cost: 239,599.2300'. The bottom of the screen has a footer with 'Management Simplified' and navigation icons for 'View Group Entries', 'Save', and 'Cancel'.

» Split Inventory Screen

» The Split Inventory Screen has a new look similar to the other changes in the Inventory screens. You can input item codes and descriptions, as well as view the total on hand, average cost and price from this screen. You can take weight from a scale from this screen and lookup inventory as well.

The screenshot shows the 'Split Inventory' screen. At the top, there is a navigation bar with 'Start', 'Inventory', and 'Split Inventory'. A help icon is in the top right. Below the navigation bar is a warning message: 'Adjustments are applied in chronological order. The date of the adjustment can effect the available quantity and value of inventory and thereby the average cost per unit. Negative weights will decrease the loose inventory, Positive weights increase loose inventory. Negative \$ amounts decrease inventory value, Positive \$ amounts increase inventory value.' Below this is a date and time display: '2/7/2019 4:50 PM' and 'Current Inventory Date January 2015'. The main area is split into two panels. The left panel is titled 'Move Material' and has fields for 'Item Code', 'Description', 'Total On Hand' (0), 'Average Cost' (0.0000), 'Price' (0.0000), and 'Weight' (0.0000). There is a 'Take Weight' button. The right panel is titled 'To Material(s)' and has a table with columns: Code, Description, Total On Hand, Cost, % of Source, and Weight. The table is currently empty. The bottom of the screen has a footer with 'Management Simplified' and a 'Cancel' button.

➤ Negative Inventory Screen

➤ The Negative Inventory Screen's layout has changed and now provides a key to indicate Earliest Negative Activity, Lowest Negative Activity and Current Balance. From this screen you can view all information regarding negative inventory. You can Correct the commodity in your inventory, view a transactions report, view inventory status or recalculate inventory directly from this screen.

New Functionality

Reports

➤ Search Function

➤ You can now search through any report for specific criteria such as date, reference number or category.

Sell

➤ New Transfers

➤ New Transfers between yards are now created the same way you would create a New Shipment.