

\*\*The release notes for 3.2.3 are interactive, so click on the images, where applicable, to get more information on the various new features for this release.

## New Functionality/ Enhancements

### General

- ▶▶ On Screen Keyboard
  - ▶ The On Screen Keyboard now has an autocomplete suggestion feature.
  - ▶ The Autocomplete feature can search for multiple properties instead of one.



- ▶▶ Shipments
  - ▶ Closed Shipments view now has an option to view shipments that have been invoiced.
  - ▶ When you close a shipment, update inventory executes in the background to lessen loading times for closing shipments.
  - ▶ When editing pack list, packs are now checked to ensure they are closed before being added to the pack list.
  - ▶ When voiding a shipment, the shipment is saved and listed as voided to avoid skipping shipment numbers.
- ▶▶ Device Integration
  - ▶ When the standalone fingerprint is running during Pay Ticket, the application locks to prevent interaction while the fingerprint program is running. SDX unlocks when the fingerprint is done scanning.
  - ▶ The signature now appears in the top left of the monitor.
  - ▶ Edit Certificate no longer loads an existing thumbprint.
  - ▶ There is now a button on the Edit Certificate screen that allows you to capture both fingerprint and signature simultaneously.
  - ▶ During Pay Ticket procedure SDX now prompts the user for a signature and thumbprint scan at the same time instead of prompting separately.
  - ▶ Devices now have a re-initialize option during device operation in case they need to re-initialized.

### Buy

- ▶▶ Materials
  - ▶ A global resource dictionary has been added for converters.
- ▶▶ Purchase Orders
  - ▶ When you select a purchase order in a ticket, the purchase order number and customer reference number are populated in Ticket Info based on data from the purchase order.
  - ▶ You can now duplicate a purchase order from the purchase order edit view.

»Ticket Info

»When you try to change the pay to customer from the Ticket Info window, there is no longer a filter that shows only Pay To customers.

»Warnings

»When an item with an LD unit of measure is part of the ticket, the ticket does not display the warning that the item needs a quantity.

»There is now a Local Computer Setting option that allows you to ignore expired licenses. When this option is checked, the license expiration warning no longer displays.

»Ticket Search

»When searching paid tickets, the search will only search the previous month if no search term is entered by default. You can change search dates without a search term. When a search term is entered the search will use all dates as the search criteria, unless otherwise specified.

Sell

» Sell Main Menu

»The Sell Main Menu now has a “View Inventory Status” button like the one found on the Inventory Main Menu.

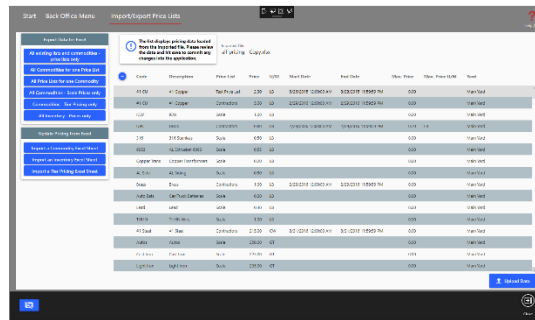
»Pack List Screen

»The Pack list screen now has an Inventory Lookup capability.

»Users can now exit the pack list screen while it loads.

Back Office

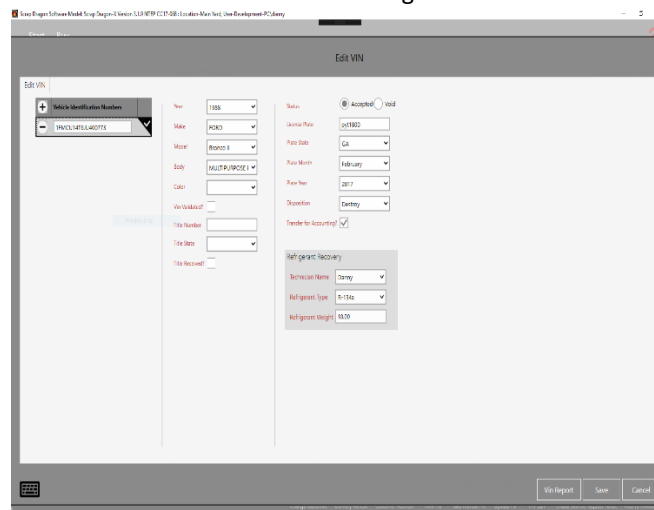
» The Import/Export Price Lists screen has been completely overhauled to include a new look as well as provide more data to the user.



»Customer VIN

»When saving a VIN, if the VIN already exists in your database the user will be prompted that this VIN may be a duplicate and if they are sure they would like to continue.

»There is now a section when adding a VIN that includes fields for Refrigerant Recovery.



- » Ticket List View
  - » Users can now search held tickets based on the scanned barcode from the customer.

## Inventory

- » Inventory Menu
  - » There is now a link to the Inventory commodity directly from the Inventory Main Menu.

## Dispatch

- » Trip Scheduler
  - » The Trip Scheduler now only displays trips that aren't completed to reduce loading times.

## User Menu

- » Batch Check Run
  - » You can now group checks by pay to customer in Batch Check Run.

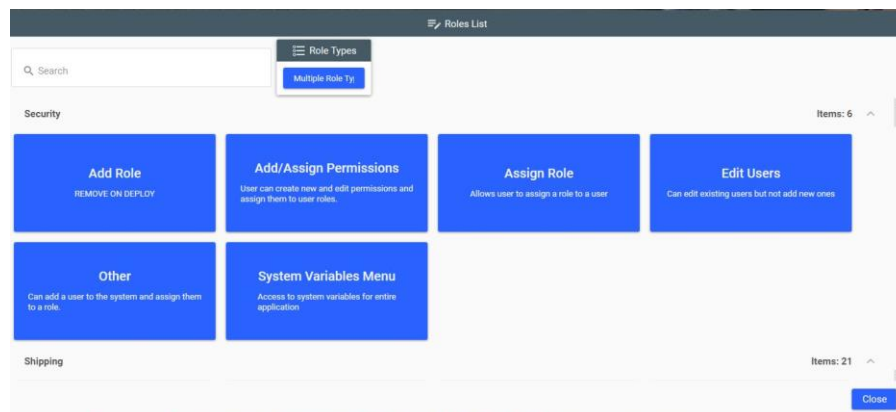
# New Look

## General

- » Start Up, Login and Logout
  - » The user is now prompted that they are exiting the program when closing the program from the Cancel command.
  - » Login view, login prompts and yard selection have all been rethemed to the blue/white theme.
- » Local Computer Settings
  - » If the new "With dialogue" box is checked for Printing Scale Tickets options, a dialogue box will appear when printing to confirm that you would like to proceed printing the default number of copies, or change the number of copies from the default. When "Yes" is selected, the scale ticket prints the selected number of copies.

## Admin/Back Office

- » Roles
  - » Viewing Roles and Editing Roles screens have been rethemed.



- » Add/Remove Cash
  - » The Add/Remove Cash screen has been re-themed.

## Buy

- » Materials Disclaimer alerts have been rethemed.
- » Pay Ticket Screen
  - » The Pay Ticket screen has been reskinned while functionality remains the same.
  - » The Pay Tickets by Number and Pay Tickets by Customer screens have been reskinned; functionality remains the same.

The screenshot displays the 'Pay Ticket' interface for a customer named 'A Valued Customer'. At the top, it shows the ticket number (5595), currency (USD), and payment method (Cash). Below this, there's a table with columns for 'Pay To', 'Amount Due', 'Pay Method', 'Hold Until', 'Status', 'Paid Date', and 'Paid Amount'. The table shows a single entry for 'A Valued Customer' with an amount due of 142.50 and a status of 'Closed'. To the right, there are buttons for 'Pay Multiple Customer Tickets', 'Print Docs', 'Manual Fingerprint/Pic', and 'Close'. A 'No Cash Card' message is displayed on the left, and a summary box on the right shows 'Ticket Total: \$142.50', 'Less Paid: \$0.00', 'Less Unpaid: \$142.50', and 'Unallocated: \$0.00'. There are also 'Pay Line' and 'Void Line' buttons.

- » Buy Main Menu
  - » Buy Main Menu has been reskinned, the Price Lookup button has been moved, and is now an option to create a Service Request Ticket directly from the Main Buy Menu.
  - » The Ticket Buy screen has been updated to include buttons that appear for the task at hand: for example, if you are viewing a Held Ticket, an "Exit No Change" button appears. The Delivery Vehicle, View Pix, and Manual Pix buttons have been moved from the bottom corner to the center of the buttons below the Ticket Area and Commodity Menu. There is now a Service Request Button directly on the Ticket Screen.

## Shipment

- » Shipment Screen
  - » Screen has been rethemed and multiple buttons have been added for increased functionality and efficiency. The Packing List and Loose Items now appear in separate tabs.

## Inventory

- » Adjustment Screen
  - » The Inventory Adjustments screen has been rethemed and now displays easier functionality, as well as more information directly on the screen. From this screen you can also choose to Edit the Adjustment or Edit Target.

The screenshot shows the 'Inventory Adjustment' screen. At the top, there are search filters for 'Adjustment Reason', 'Item Code', and 'Description'. The main area is titled 'Current Inventory Position' and displays the following data:

Loose Weight	0 LB	Average Cost	0.0000 / LB
Packed Weight	0 LB	Total Cost	0.0000
Total Weight	0 LB	Unit of Measure	LB

Below this, there are two buttons: 'Edit Adjustment' (checked) and 'Edit Target'. The 'Edit Adjustment' button shows 'Average Cost' as 0.0000. The 'Edit Target' button shows 'Target Average Cost' as 0.0000. At the bottom right, there are 'Ok' and 'Cancel' buttons.

